

4 Maes Y Foel, Dyserth, Denbighshire LL18 6AP

£180,000

3 1 2

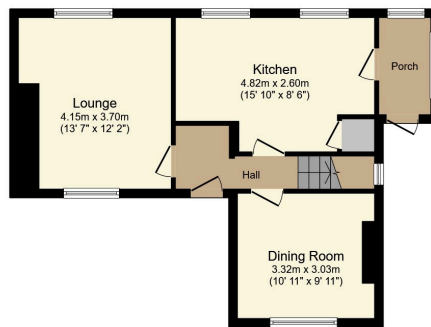


This three bedroom semi detached house is situated in a cul-de-sac position in the popular village of Dyserth and is within walking distance of a Primary school and local amenities. The property affords two reception rooms, kitchen and shower room with enclosed gardens and outside Storage.

Directions From the High Street turn onto Thomas Avenue and right again into Maes Y Foel where the property will be seen on the left hand side.

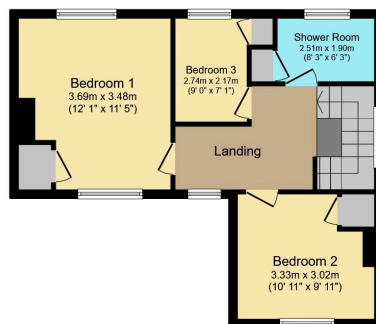
Key Features

- SEMI DETACHED HOUSE
- CUL-DE-SAC POSITION
- WALKING DISTANCE OF PRIMARY SCHOOL
- TWO RECEPTION ROOMS
- THREE BEDROOMS
- SHOWER ROOM
- ENCLOSED GARDENS
- OUTSIDE STORE
- FREEHOLD
- EPC - E COUNCIL TAX BAND - C



Ground Floor

Floor area 49.4 sq.m. (531 sq.ft.) approx



First Floor

Floor area 46.2 sq.m. (497 sq.ft.) approx

Total floor area 95.5 sq.m. (1,028 sq.ft.) approx

This plan is for illustration purposes only and may not be representative of the property. Plan not to scale.

Powered by audioagent.com